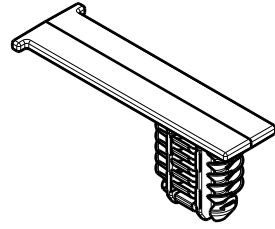
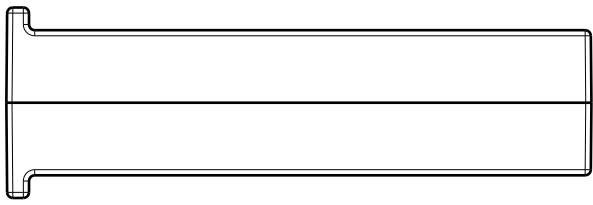
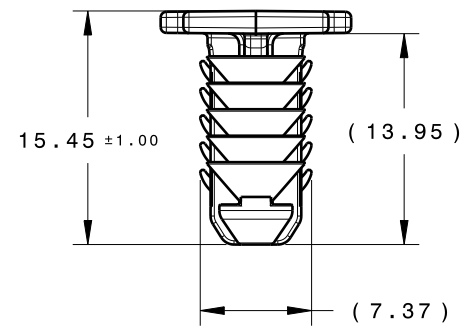
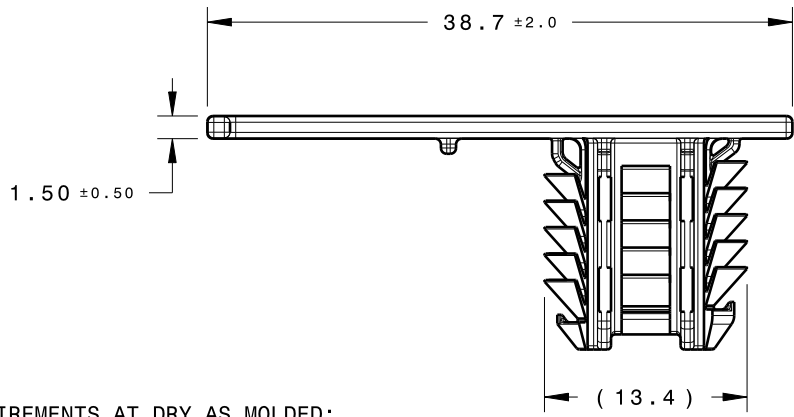


Revision Level			Revision Record	Changed	Date	Approved	Date
Drawing	State	Part					
06.1	Design Release	C	SEE ECN# 012604	CJR	03/12/14	KVH	03/12/14

06.1



ISOMETRIC VIEW (1/1)



- REFERENCE:  
 PERFORMANCE REQUIREMENTS AT DRY AS MOLDED:
1. FIR TREE PUSH IN FORCE: REF. 10 LBS MAX IN EACH APPLICABLE OVAL HOLE SIZE AND A PLATE THICKNESS OF 1.8mm
  2. FIR TREE PULL OUT FORCE: REF. 25 LBS MIN IN EACH APPLICABLE OVAL HOLE SIZE AND A PLATE THICKNESS OF 1.8mm
  3. SHEET METAL THICKNESS RANGE: 0.60mm - 6.0mm
  4. APPLICABLE OVAL HOLE SIZES:
    - A. 6.2 X 12.2mm
    - B. 6.5 x 12.5mm
    - C. 6.5 x 13.0mm
    - D. 7.0 x 12.0mm

06.1	
COLOR	TYPE NUMBER
NATURAL	BCFTOVAL2
BLACK	BCFTOVAL2

Material PA66HIRHS COLOR: SEE TABLE	Units    millimeters	The copyright of this drawing is reserved by HellermannTyton. It is issued on condition that it is not reproduced, copied or disclosed to a third party, either wholly or in part, without the consent of HellermannTyton.	Drawn    KVH    08/17/12	Article/Type-No    SEE TABLE	Scale    2:1
	Tolerance defined on each dimension		Approved    SJA    08/17/12	Title TAPE CLIP WITH OVAL FIR TREE	Project Number 11-0339
			<b>HellermannTyton</b> North America Web: www.hellermann.tyton.com	Drawing-No    PRODUCTION : Phase <b>11-0339-011-CSU</b>	Format    AH Sheet    1/1